

# **EIT Health**

## **Innovation for Better Longer Lives**

EWI-Focus 20: Vlaanderen in de Knowledge and Innovation  
Communities (KIC's)

(17-June-2015)

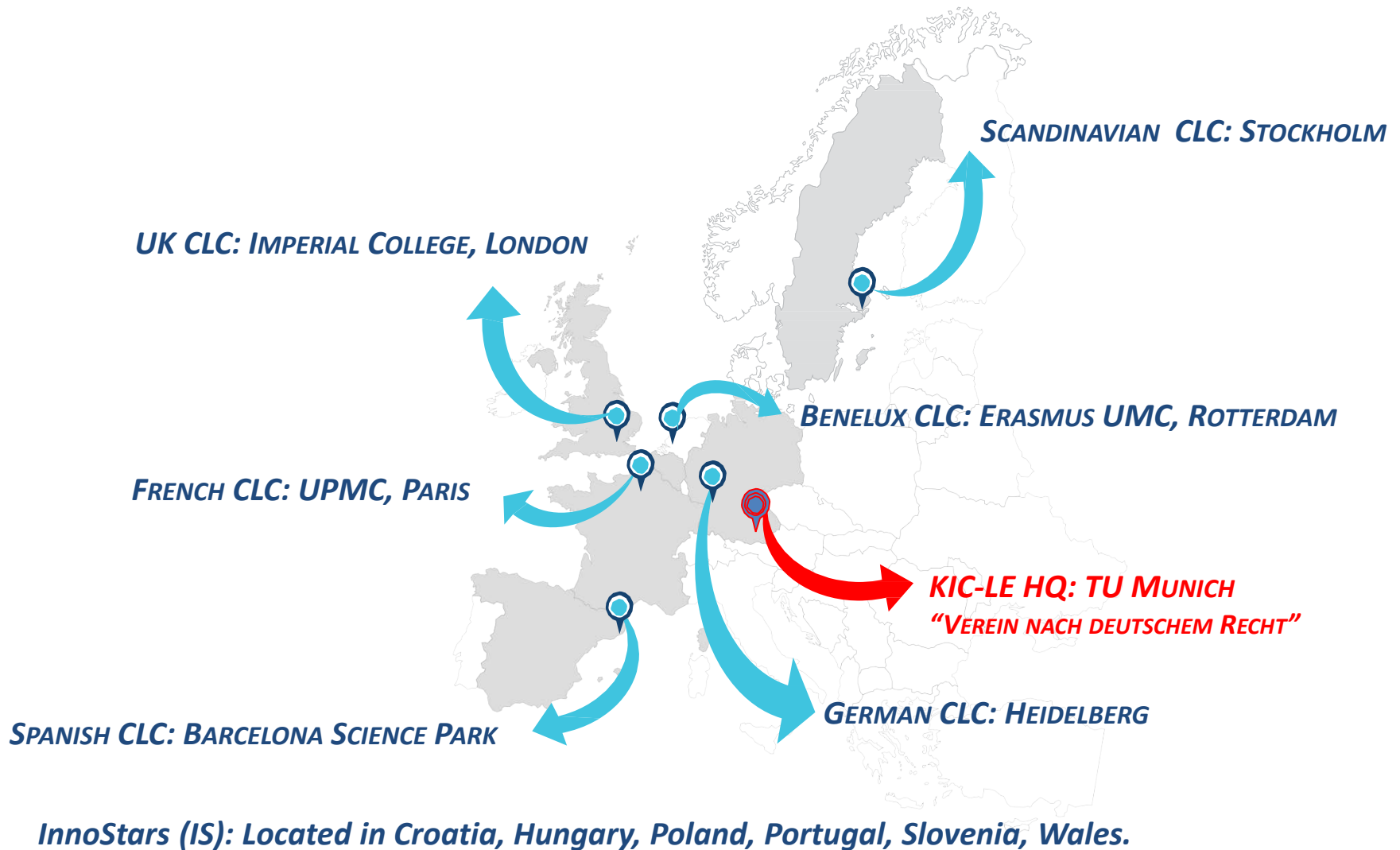
Johan Bil, Technology Transfer Adviser, UGent  
Stan Snowball, Programme Manager EIT Health, UGent

---

# What is EIT Health?

---

- The first European healthcare and life-sciences community addressing “Healthy Living and Active Ageing” that focuses explicitly on:
  - **Increasing the rate of innovation** by encouraging European entrepreneurs and firms to convert basic research into marketable products, services and concepts with socio-economic impacts.
  - **Nurturing new talents** that respond to the needs of European life sciences industries.
  - **Involving citizens** in the innovation process.



# EIT Health Core Partners (52 core / 92 associate)\*

Education / Research		
No	Partner	CLC
1	KU Leuven	BENE
2	Erasmus UMC	BENE
3	TU Eindhoven	BENE
4	Ghent University	BENE
5	Universidad Politecnica Madrid	ES
6	Universidad de Barcelona	ES
7	IESE Business School	ES
8	Université Joseph Fourier (UJF)	FRA
9	Université Pierre et Marie Curie (UPMC)	FRA
10	FAU Erlangen-Nürnberg	GER
11	RWTH Aachen	GER
12	TU München	GER
13	Uni Heidelberg	GER
14	Karolinska Institutet	SCAN
15	University of Copenhagen	SCAN
16	KTH	SCAN
17	Uppsala Universitet	SCAN
18	Imperial College London	UKI
19	University of Newcastle	UKI
20	Trinity College Dublin	UKI
21	University of Oxford	UKI

Industry		
No	Partner	CLC
1	Achmea	BENE
2	Philips	BENE
3	Abbott	ESP
4	ATOS	ESP
5	Ferrer	ESP
6	Air Liquide	FRA
7	Becton-Dickinson France SAS	FRA
8	Bull	FRA
9	Groupe SEB	FRA
10	Institut Merieux	FRA
11	Sanofi	FRA
12	Sorin	FRA
13	AbbVie	GER
14	Profil GmbH	GER
15	Roche Diagnostics	GER
16	Siemens Healthcare	GER
17	UCB Bioscience	GER
18	LEO Pharma	SCAN
19	Novo Nordisk	SCAN
20	Thermo Fisher Scientific	SCAN
21	Intel	UKI
22	Medtronic	UKI

Research		
No	Partner	CLC
1	Fundacio Institut de Bioenginyeria de Catalunya (IBEC)	ES
2	Instituto de Biomechanica de Valencia (IBV)	ES
3	CEA	FRA
4	INRIA	FRA
5	Inserm	FRA
6	Max-Planck-Gesellschaft	GER
7	RISE	SCAN

Public		
No	Partner	CLC
1	Stockholms Stad	SCAN
2	West Midlands Academic Health Science Network (AHSN)	UKI

<http://eit.europa.eu/interact/bookshelf/eit-health-factsheet>

# Belgium / Netherlands CLC Partners



Core

Associate



Universiteit  
Leiden



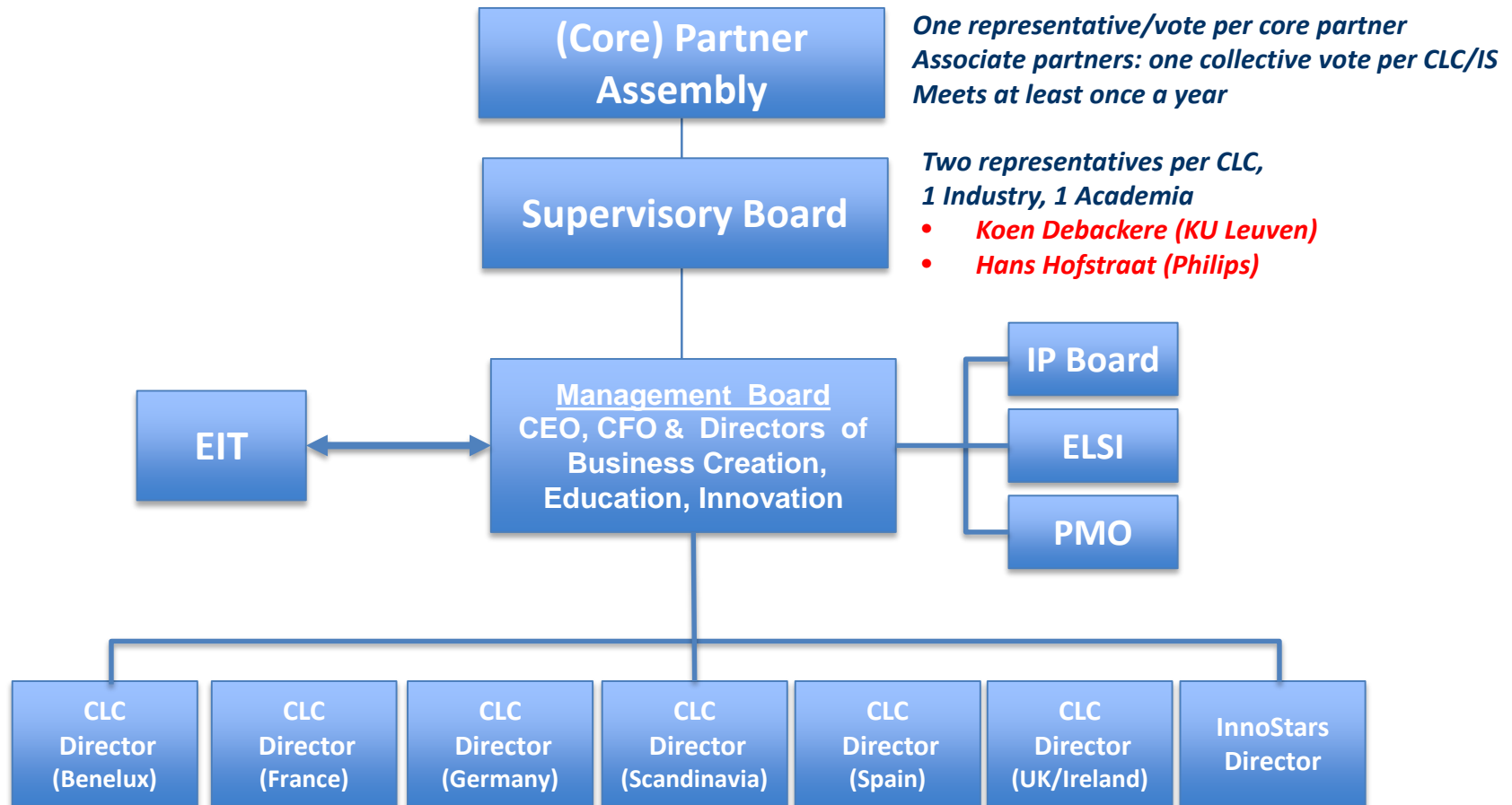
umcg



Maastricht UMC+



# Governing & Advisory Bodies



# EIT Health: What are the Benefits?

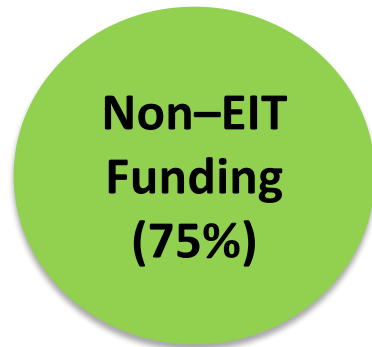


- **Fast, straightforward access** to a diversified network of partners and associated pool of resources, knowledge, facilities and expertise.  
**Matchmaking to:**
  - Form (or expand) consortia to capitalize on European funding opportunities e.g. H2020
  - Further develop and/or scale-up existing national innovations across Europe.
  - Develop new solutions to complex challenges in healthcare e.g. implementation of personalised medicine strategies or delivery of complex health care services in the domestic environment.
- **Enhanced mobility of talent:** via exchange programmes between partners and “EIT-health” branded courses.
- **Function as a focal point** for local industry and facilitate their involvement in KIC innovation projects as project partners (especially SME’s)
- **Demonstrate alignment** with EU, Flanders and local strategic investment programmes attracting additional funding/PR opportunities.
- **Complementary EIT funding:** another potential funding avenue for researchers and entrepreneurs.

# Incentive Based Co-Funding Mechanism

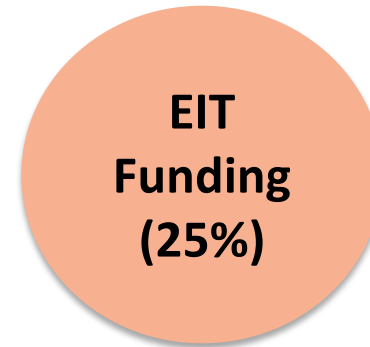
## KIC Complementary Activities (KCA)

Consortium's activities, associated funds & in-kind resources relevant to healthy living & active ageing



## KIC Added Value Activities (KAVA)

Activities integrating the “knowledge triangle” (research, education, innovation) as detailed in annual business plan



- No. of business ideas incubated/ start ups created
- No. new or improved products, services, processes launched
- Knowledge transfer and adoption
- No. new “EIT-Health” graduates
- Attractiveness of education programmes



### ***EIT Funding\****

<b>2015:</b>	<b>3 M€</b>
<b>2016:</b>	<b>30 M€</b>
<b>2017:</b>	<b>45 M€</b>
<b>2018:</b>	<b>60 M€</b>
<b>2019-2022:</b>	<b>402 M€</b>



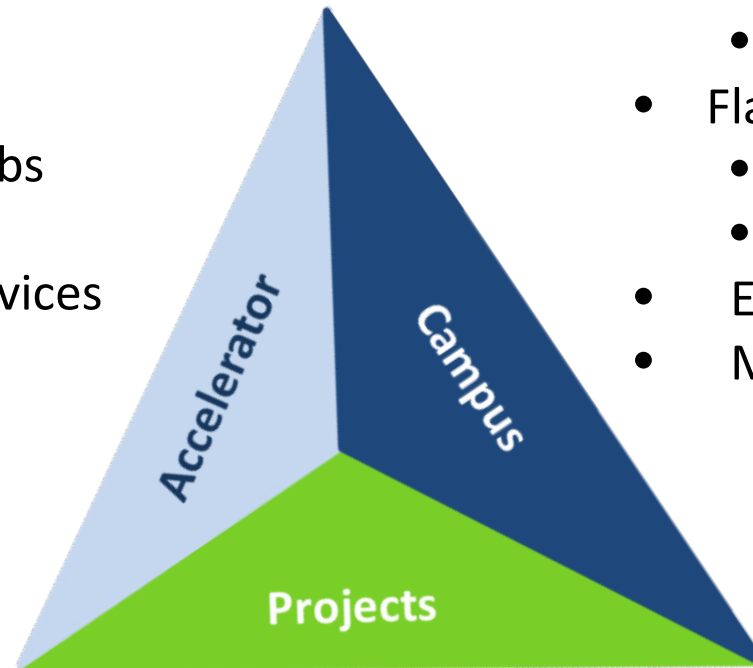
# EIT Health – Major Components

**Accelerator** Pool of existing facilities  
& expertise across EIT Health:

- TT Offices
- Incubators
- Test beds/living labs
- Business coaches
- Market access services

**Campus** 4 Major pillars:

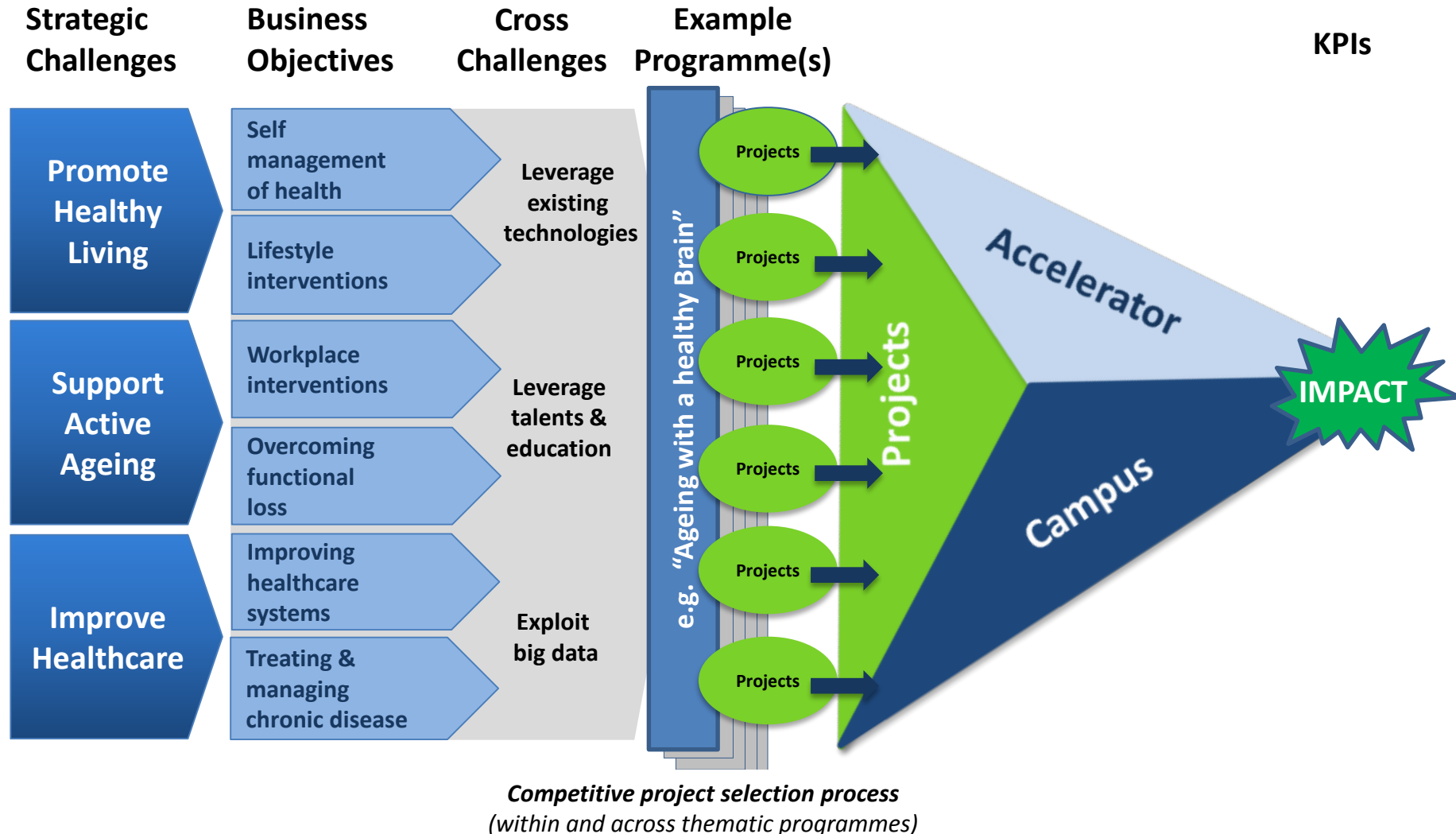
- Academic programmes
  - MSc, PhD
- Flagship programmes
  - Innovation Fellowship
  - Entrepreneurship lab
- Executive Education
- MOOCs/ Health literacy



## Projects

- Head starts
- Innovation by ideas
- Innovation by design

# EIT Health Approach



- **Motivate active personal lifestyles**
  - Conduct pilots to understand how targeted lifestyle interventions can lead to more effective self-management of healthy behaviours.
- **Metabolic health**
  - Prevention, earlier diagnosis and improved treatment options in metabolic diseases and their complications.
- **Ageing with a healthy brain**
  - Identifying at risk populations and life-long prevention to protect or delay development of cognitive impairment and dementia.

- **Mobility and independence throughout life**
  - Innovations to support independent life for people with or at risk of reduced mobility: early interventions to maintain physical independence and prolong positive contributions to society.
- **Personalized oncology and integrated cancer care**
  - Standardize the current regionally fragmented cancer treatment into a pan-European system of individualized treatment schemes (short term) which will allow new service models and products for prevention, early diagnosis, treatment and follow-up care (long-term).
- **Sustainable continuum of care to support active living in Europe**
  - Create and test connected care solutions to keep people with chronic disease at an optimum level of health and capability. At the same time, move care from more expensive and labour intensive settings to the home.
- **Big data & -omics**

# EIT Health Projects – Key Characteristics\*



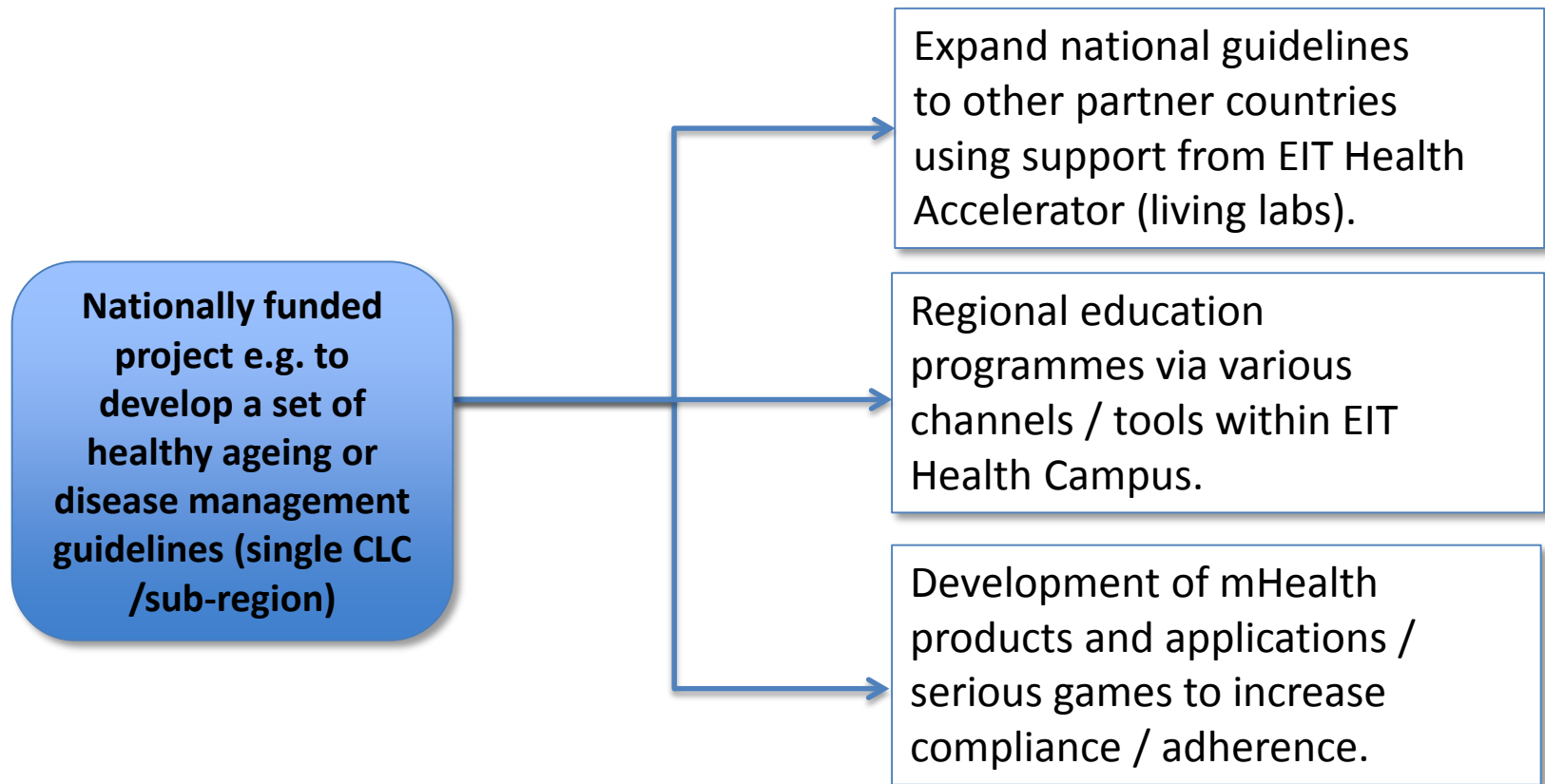
	Head Starts	Innovation by Ideas (Solution driven)	Innovation by Design (Market need driven)
Objective	Rapid enablement of pilots, proof of concept etc.	Further development, expansion of existing innovation already in development. "Bottom-up"	Design & development of new solutions to specific innovation barriers. "Top down"
Lead Partner	Core or associate	Core or associate	Non-academic Core (1 project per year as a lead)
# CLCs involved	1	At least 2	At least 2
Frequency	Any time (to an annual ceiling)	1 call per year	2 calls per year (1 for 2105)
Approval period	Max. 1 Month	Approx. 6 months	< 6 months
<b>No. projects 2016 (indicative)</b>	<b>25</b>	<b>11-12</b>	<b>6-7</b>
<b>**Total budget (indicative)</b>	<b>50 K€</b>	<b>1-2 M€</b>	<b>6-8 M€</b>

# EIT Health Projects – Evaluation Criteria

Evaluation Criteria	Innovation Project	
	By Ideas*	By Design*
Project excellence; contributions to planned health outcomes	30 (20)	25 (17)
Potential for commercialization & scalability	35 (25)	50 (40)
Project Impact	35 (25)	25 (17)

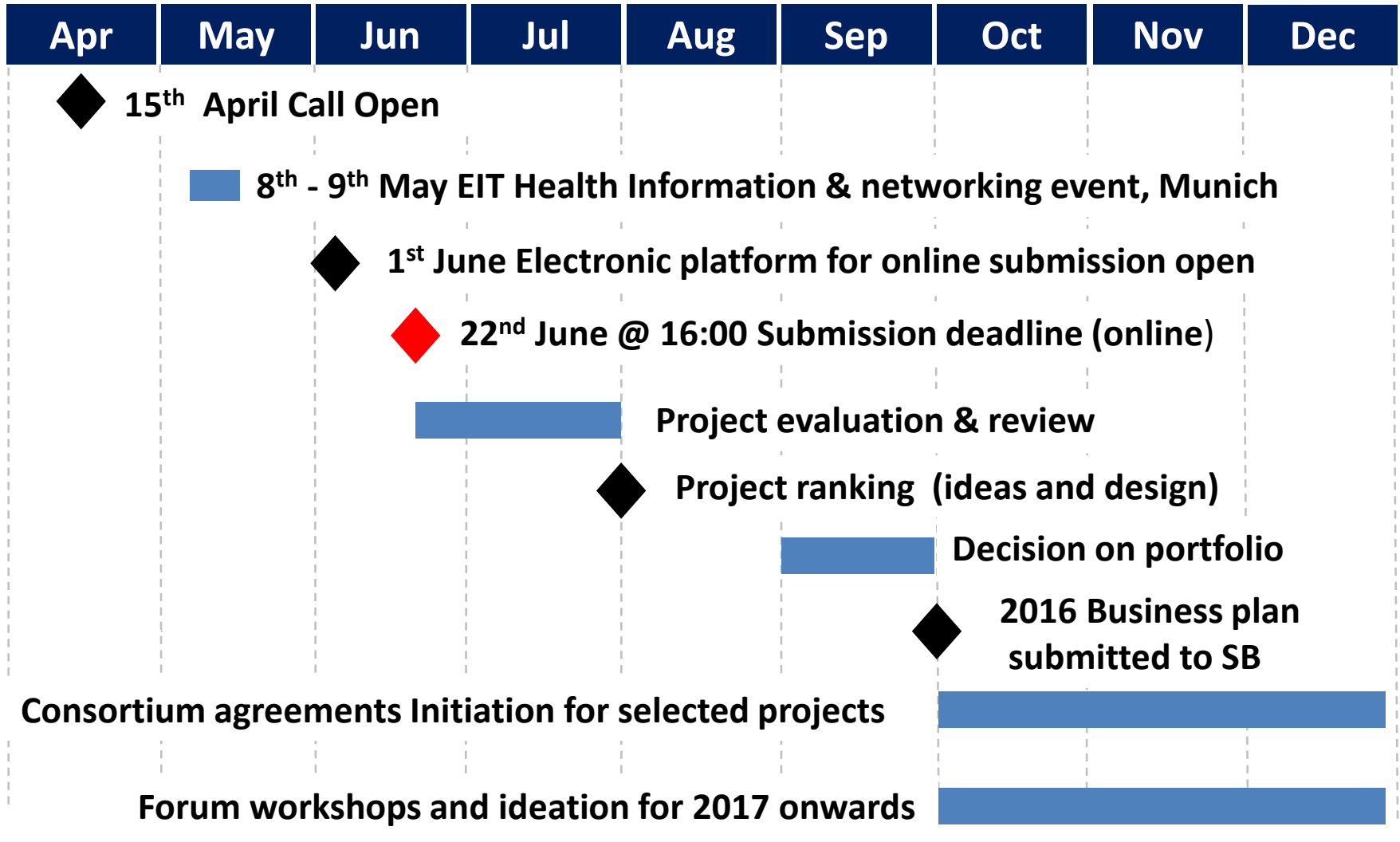
*\* Maximum score (threshold)*

# EIT Health - Potential Scenario *(for illustrative purposes only)*



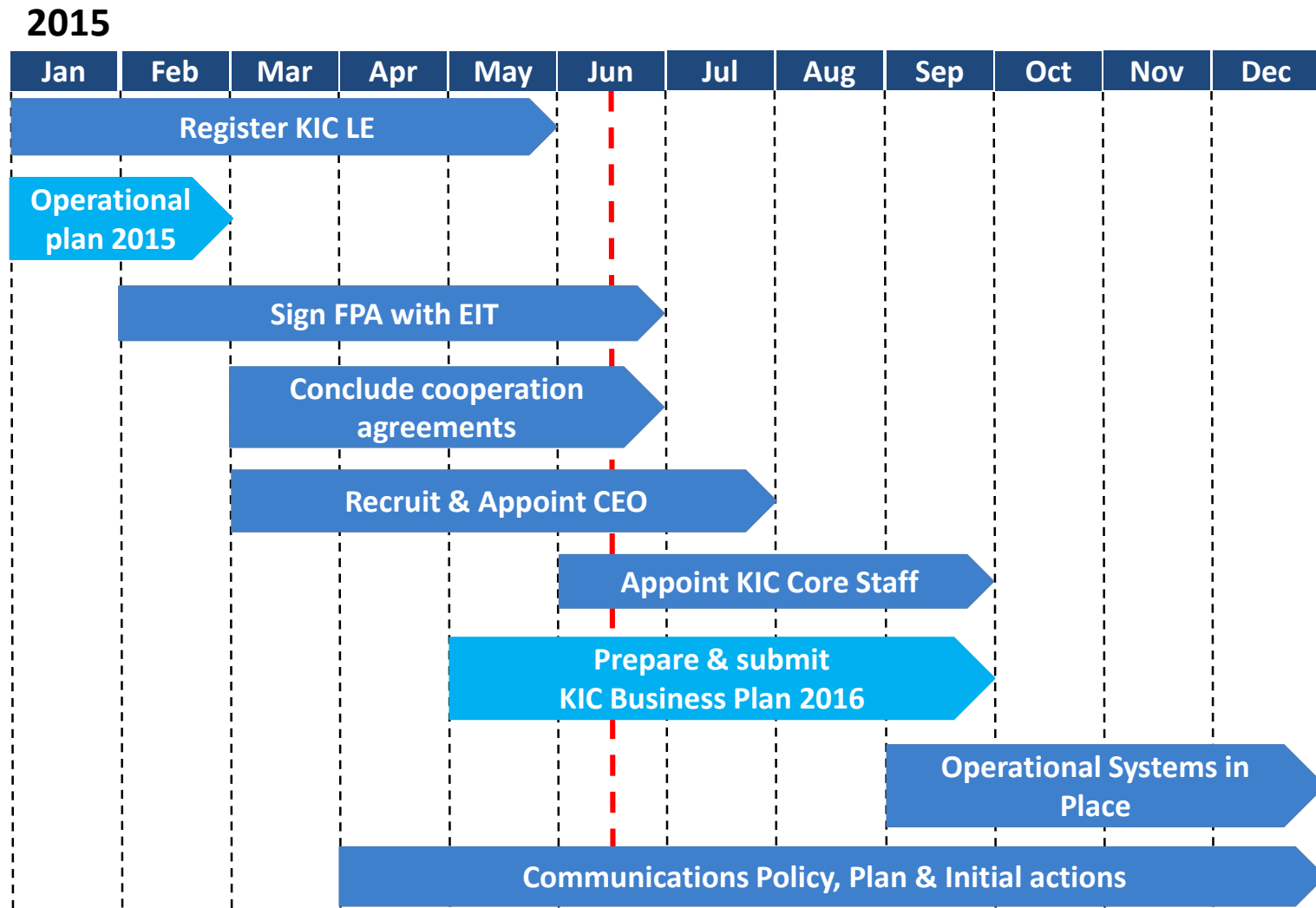
# Innovation Project Timeline (2015/2016)

2015





# EIT Health Ramp-Up Phase\*



\*Taken from the final KIC bid submitted to the EIT on 10-Sep-2014



[Visit: https://www.eit-health.eu/](https://www.eit-health.eu/)