



HORIZON 2020

Monitoring Report 2014

**Marco Grancagnolo
DG RTD Evaluation
European Commission**



HORIZON 2020

SCENE-SETTING

What does Monitoring do:

- Provides factual data based on (yearly) time series.
- Tracks progress and performance "on the ground".
- Links evidence gathering to policy objectives.
- Feeds into Interim Evaluation and future Impact Assessment.



ANNUAL MONITORING REPORT

Art. 31 of the Horizon 2020 regulation :

- Implementation of Horizon 2020 and the EIT.
- Use both qualitative and quantitative evidence.
- Information on cross-cutting issues (ex. SME participation, sustainability and climate change, gender equality, widening participation, funding for PPP and P2P, etc.).
- Progress on performance indicators.





MONITORING REPORT 2014

- First year of implementation of the Work Programme 2014-2015.
- The scope is limited to calls closed by 31 December 2014.
- Projects within these calls are covered if grant agreements are signed before 1 December 2015 (97.8% of selected projects).
- The Monitoring Report 2014 was published on 7 April 2016 (SWD(2016)123).

STRUCTURE

1. Introduction
2. Assessment of Horizon 2020 calls closed in 2014
3. Horizon 2020 Operation Implementation in 2014
4. Implementation of Priorities and Specific Objectives
5. Progress on Cross Cutting Issues
6. Examples of Projects Funded in Horizon 2020
7. Results of the Stakeholder Survey (NCPs)
8. FP7 Results
9. Concluding Remarks

Annex I: Methodology

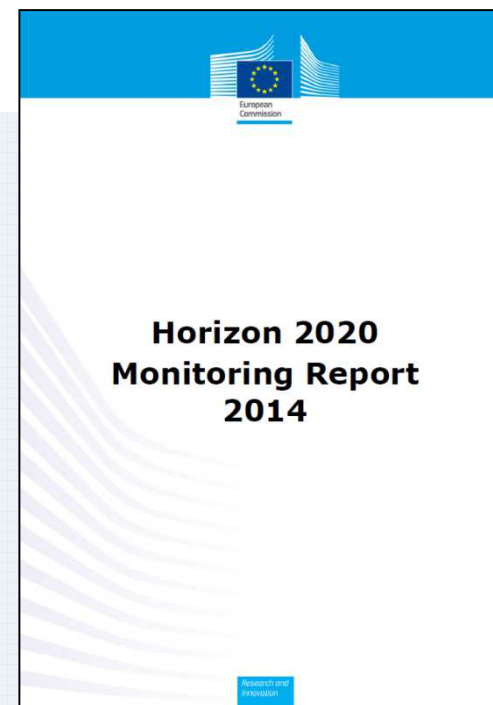
Annex II: Results of the Stakeholder Survey

Annex III: Implementation towards priorities and specific objectives

Annex IV: Implementation towards cross-cutting issues

Annex V: Top 50

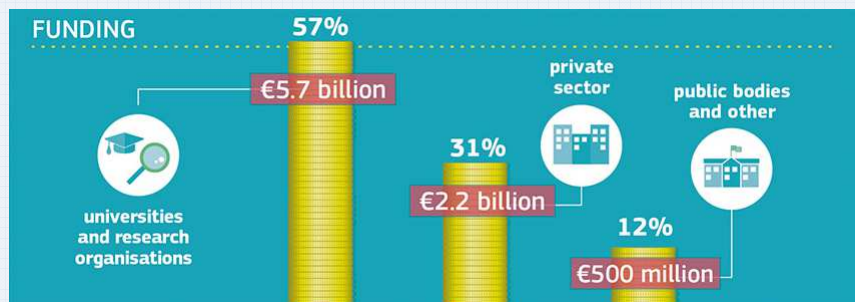
Annex VI: Glossary





European Commission

KEY FINDINGS

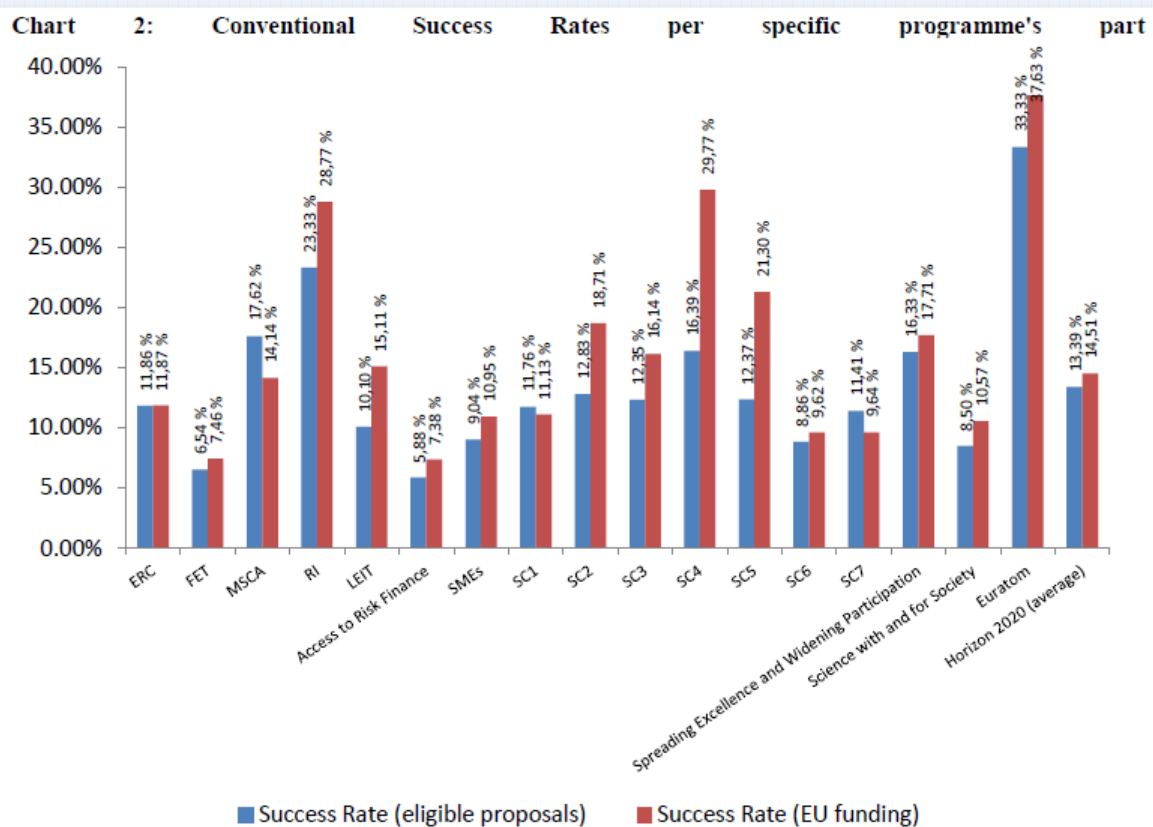




European
Commission

OVERSUBSCRIPTION

Average success rates are between 13% and 14% (19% in FP7).





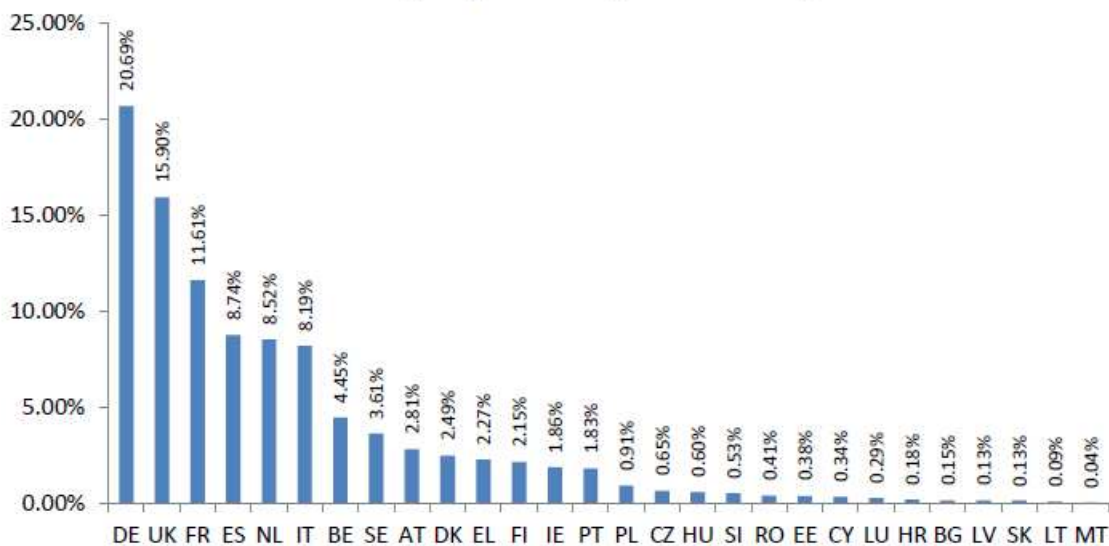
SUCCESS RATES OF EU MEMBER STATES

Success Rates of EU Member State varies significantly across the three Horizon 2020 pillars.

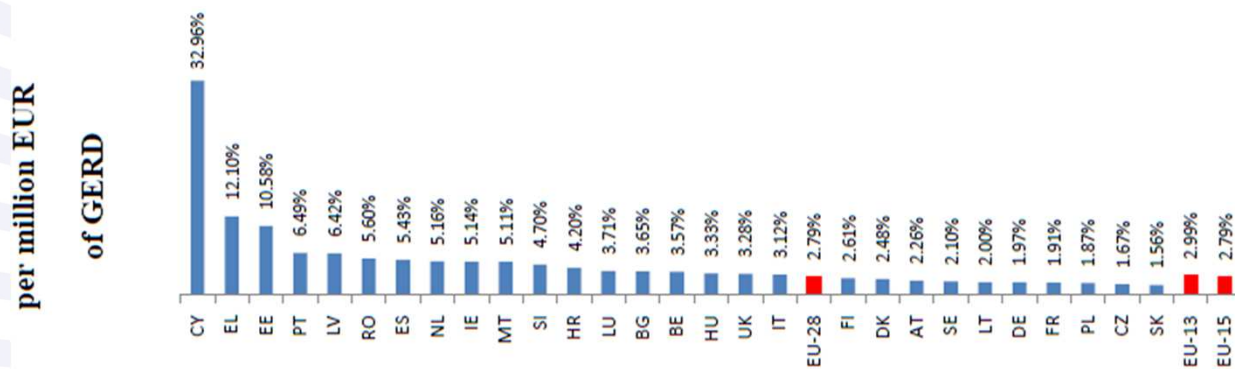
- In EU-15 Member States, the trend is a success rate above 10% for each of the three priorities (above 15% for UK, AT, and IE).
- In EU-13 Member States, the trend is a high success rate in one or two pillars (exception for EE and PL).
- MT has the highest success rate in Excellence Science; LV has the highest success rate in Societal Challenges.

PARTICIPATIONS OF EU MEMBER STATES

Chart 7: Share of EU contribution in signed grants deriving from 2014 calls per Member State



Source: DG Research and Innovation.

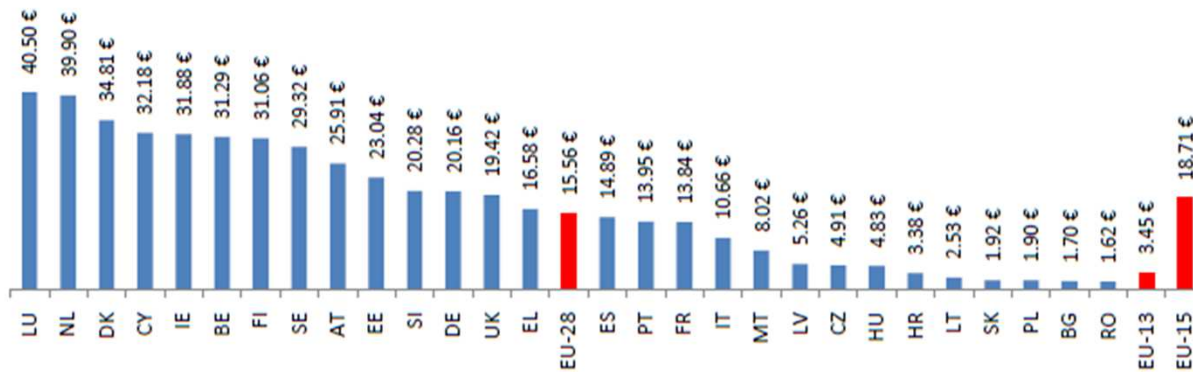




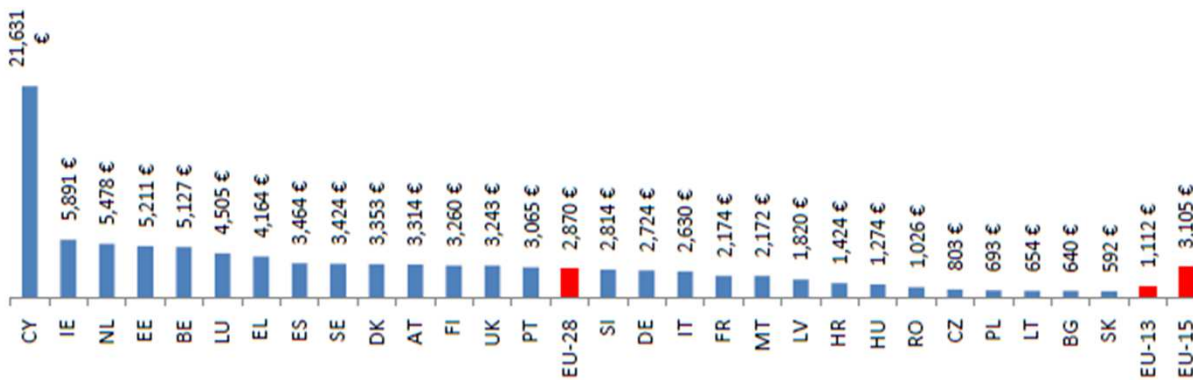
European
Commission

PARTICIPATIONS OF EU MEMBER STATES

per inhabitant
(in EUR)



per researcher (in EUR)



PROGRESS ON (SELECTED) CROSS-CUTTING ISSUES

SME Participation

- 23% of combined LEIT and SC budget to SME participants (target 20%)
- 5.5% of combined LEIT and SC budget allocated through the SME instrument (target 7%)

Gender

- Women participation in H2020 Advisory Groups is 52% (target 50%)
- Proportion of women experts in evaluation panels is 36,3% (target 40%)

SustDev, Climate, Biodiversity

- 46% of expenditure to Sustainable Development-related activities (target 60%)
- 24% of expenditure to Climate-related activities (target 35%)
- 4% of expenditure to Biodiversity-related activities.

From Discovery to Market application

- 12.6% of total EU contribution invested in Innovation Actions
- In addition, 4.3% invested in Innovation Actions in JU calls.



FOCUS ON PPPs AND P2P

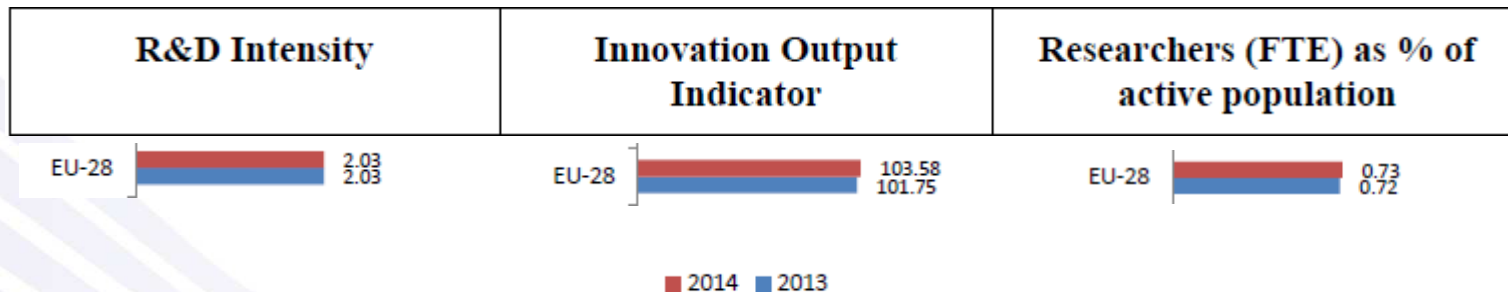
Financial Contribution to PPPs and P2Ps:

- PPPs: EUR 286,2 million in 47 retained proposals in BBI, ECSEL and FCH2 calls.
- cPPPs: EUR 818,6 million in 158 retained proposals in FoF, EeB, EGVI, SPIRE, 5G, Robotics, Photonics, HPC calls.
- P2P: EUR 58,5 million in 207 retained proposals in AAL2, EMPIR and Eurostars2 calls.

Leverage Effect of P2Ps:

- Art. 185 initiatives: Investment (public funding only) of EUR 178,1 million through an EU contribution of EUR 58,5 million (leverage 2:1).
- ERA-NET Cofund actions: Investment (public funding only) of EUR 250 million through an EU contribution of EUR 92,4 million (leverage 1,7:1).

KEY PERFORMANCE INDICATORS



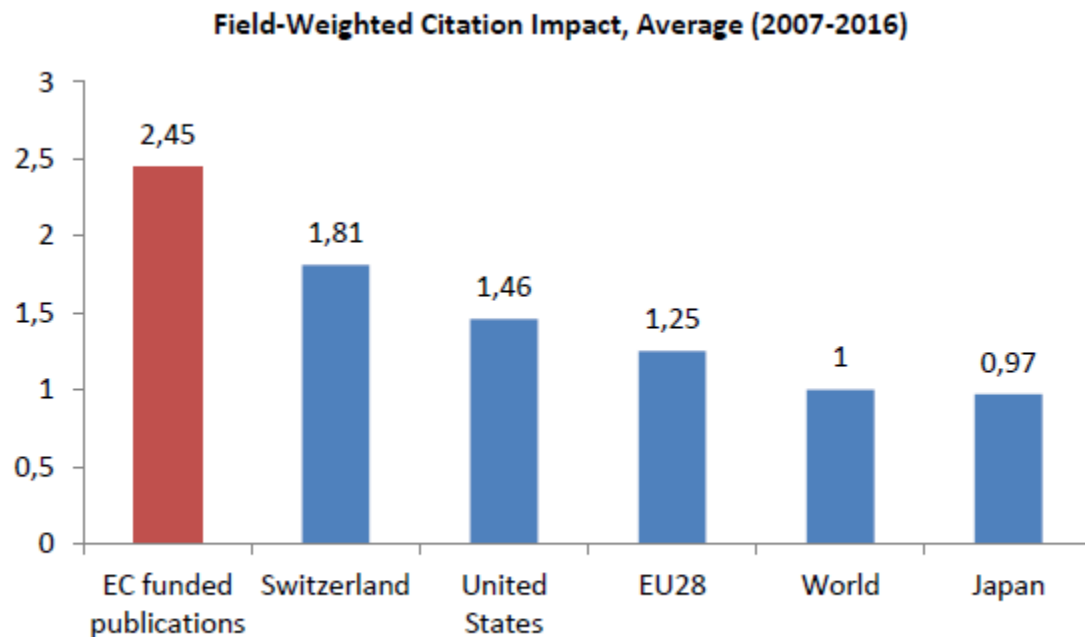
Progress compared to the baseline (2013) is mixed, with the EU not progressing in terms of R&D intensity, improving little in terms of researchers in active population, and progressing somewhat in terms of innovation output.

EU-15 did not progress in terms of R&D intensity, while some EU-13 weak performers are catching up. Both EU-15 and EU-13 show progress in terms of innovation output, whilst limited progress in the researchers indicator is observed for both EU-15 and EU-13.



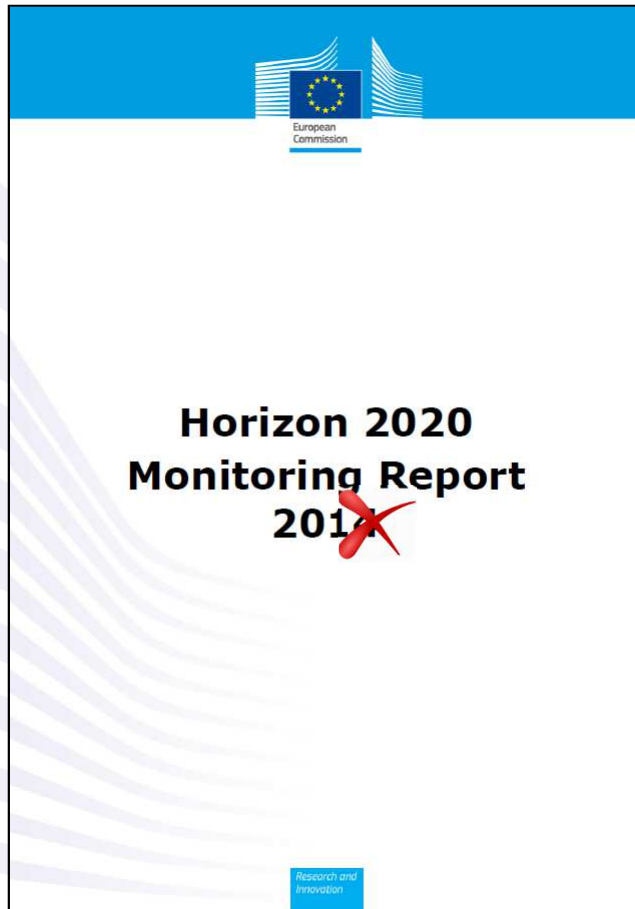
FP7 RESULTS

- At the time of the Ex-Post Evaluation of FP7, 50% of the projects were still ongoing.
- More than 2.000 grants belonging to FP7 calls were signed only in 2014.
- FP7 projects are still producing results.



Source: SciVal based on Corda-Sesam-Respir data⁷⁴

TOWARDS MR2015



FUTURE IMPROVEMENTS

- Publication in Q4 2016
- Analysis of trends (incl. NCP survey)
- More data on indicators
- Improved communication (brochure)
- Others?

Any Questions?

Contact:

Marco.GRANCAGNOLO@ec.europa.eu